

# B-Line

# Line

B-Line S.r.l.  
Via Galileo Galilei, 13/B  
35030 - Sarmeola di Rubano (PD)  
ITALY

T. +39 049 8978245  
F. +39 049 633499  
E. [info@b-line.it](mailto:info@b-line.it)  
W. [b-line.it](http://b-line.it)

**HELIX**

Design by Favaretto & Partners

CARTELLA TESSUTI / FABRIC REFERENCE CHART

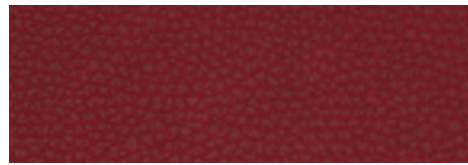
**FP PLATINUM FLUKSO**  
82% PVC  
18% PES



TFP5



TFP12



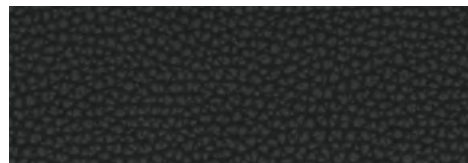
TFP30



TFP15

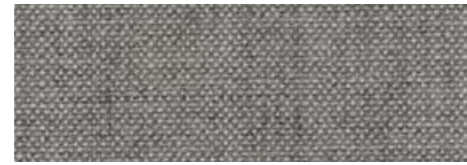


TFP22



TFP23

**RX REMIX 3 KVADRAT**  
90% Lana vergine / New wool  
10% Nylon



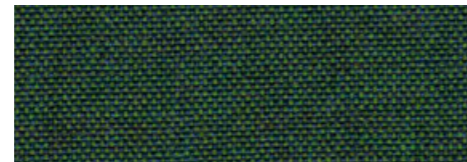
TRX123



TRX242



TRX653



TRX982

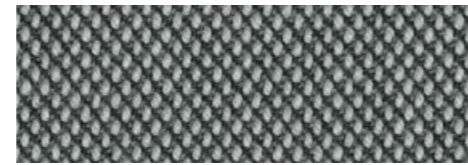


TRX762



TRX173

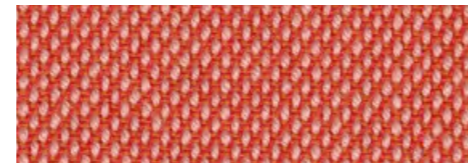
**ST STEELCUT TRIO 3 KVADRAT**  
90% Lana vergine / New wool  
10% Nylon



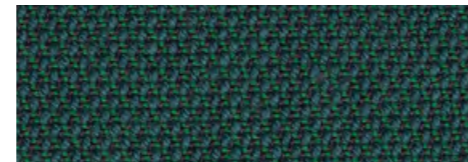
TST133



TST205



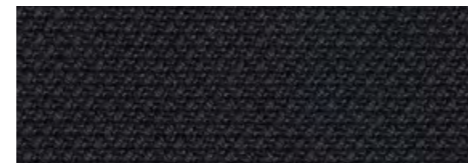
TST526



TST976



TST716

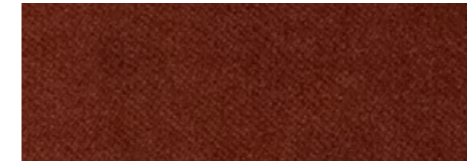


TST195

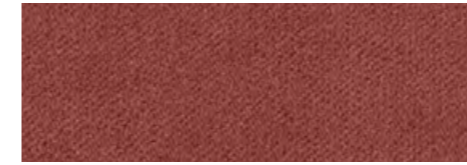
**VG GORGEOUS FLUKSO**  
100% PES FR – Trevira CS



TVG2153



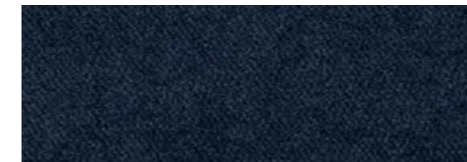
TVG2112



TVG2113



TVG2131



TVG2128

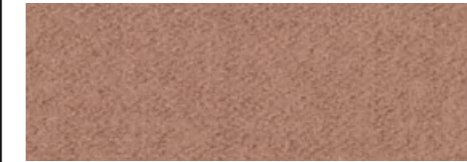


TVG2148

**HE HERO KVADRAT**  
96% Lana vergine / New wool  
4% Nylon



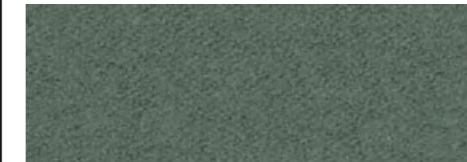
THE211



THE311



THE541



THE931

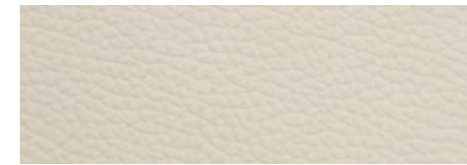


THE711



THE791

**LN PANAMA DANI**  
100% Pelli bovine europeae /  
European cow hides



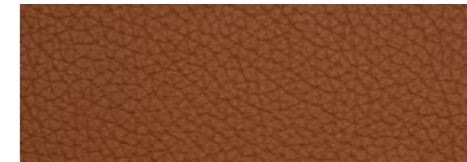
LN5506



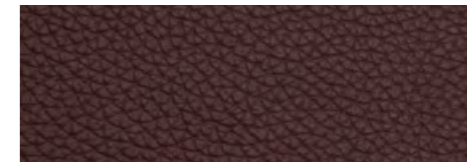
LN5320



LN5210



LN5080



LN5220



LN5300

**SPECIFICHE TESSUTI  
/ FABRIC FEATURES**

**Platinum  
Flukso**

650 g/mq / g/sqm  
100.000 Martindale



**Remix 3  
Kvadrat**

415 g/mtl / g/lin.m  
100.000 Martindale



0575 / 12



**Steelcut Trio 3  
Kvadrat**

770 g/mtl / g/lin.m  
100.000 Martindale



0575 / 17



**Gorgeous  
Flukso**

450 g/mq / g/sqm  
100.000 Martindale



**Hero  
Kvadrat**

580 g/mtl / g/lin.m  
45.000 Martindale



0575 / 15



**Panama  
Dani**

sp / thk 1,0-1,2 mm

**resistenza allo strappo  
/ tear resistance**  
20 N I EN ISO 3377 -1

**resistenza alla flessione  
/ flex resistance**

**nessuna rottura  
in 50.000 cicli  
/ no damage  
in 50.000 cycles  
EN ISO 5402**